



THE **SMART ACTUATED VALVES** EXPERTS

SAV-05

Smart Water Timer

User Manual





THE SMART ACTUATED VALVES EXPERTS

Contents

1. Product features
2. Product parameters
3. Installation and network connection instructions
 - (1) The gateway connects with network tutorial
 - (2) Add sub-device tutorial
4. Mobile APP interface



THE SMART ACTUATED VALVES EXPERTS

Summary

Product features:

1. Mobile phone wireless remote control

After the network is configured, the smart automatic watering device can be turned on or off through the mobile phone remote control anytime and anywhere.

2. Real-time feedback on the watering situation

The watering situation is fed back to the mobile phone in real time, so it is more safe to use.

3. Long standby time

The standard version uses two AA dry batteries, and the standby life can be up to 1 year^①; the high-end version is equipped with an amorphous solar cell board + rechargeable battery, and the standby life can be up to 3 to 4 years.

4. The wireless signal is stable

Adopting RF signal transmission technology, the signal coverage can reach 180 meters^② in the open area, which is 2~3 times of WiFi, and it is more stable. Up to 4 brick walls can be penetrated indoors.

5. Intelligent voice control system

Voice smart speakers such as Amazon Alexa, Google Assistant, Doer-OS, etc. can be used to wake up the water valve to work, free your hands, and interact with smart devices in a more natural way to achieve linkage.

6. Timing and quantitative setting

Set the time and duration of watering for multiple periods of the day, and at the same time set the amount of watering.

7. Intelligent linkage

It can be linked with intelligent devices such as overflow sensors to achieve the set conditions, and the water valve can be turned on or off.

8. History query

Each watering will record the time and duration, which can better manage the watering.

9. Shared device function

You can share the equipment with your family or other users, to feel the convenience of the smart watering device.

① Remark 1: According to the frequency of booting twice a day



② Remark 2: Depends on the surrounding environment of the equipment



THE SMART ACTUATED VALVES EXPERTS

Product parameters

	Product name	Smart water timer
	Item Name	SAV-05
	Tube size	1/2"、3/4"
	Power	5V / 1A
	Pressure	≤1.6Mpa
	Size	176*112*66mm
	Standard type	Dry batteries with 2 pc
	High level type	Monocrystalline Solar panel + Chargeable batteries

<p>Black</p>  <p>White</p> 	Item Name	Smart gateway
	Item Name	SAV-05 (06)
	Working temperature	-10°C~ +50°C
	Working humidity	0-95%RH No condensation
	Operating Voltage	AC100~240V
	Wireless connection	Wi-Fi IEEE802 11 b/g/n 2.4G Below 1GHz
	Indoor	Penetrate 2-3 walls
	Outdoor	Covering more than 180 meters wide area



THE SMART ACTUATED VALVES EXPERTS

Gateway networking tutorial

(Video tutorial)

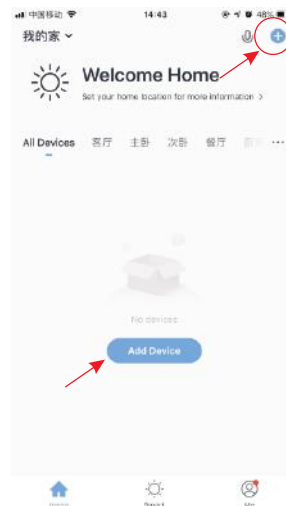
- 1、 Press the switch key for 10s, the red indicator light will switch to the flashing state
- 2、 Open the smart home/Tuya smart APP to register and log in,
- 3、 Click "+" in the upper right corner, or select "Add manually"
- 4、 Click "Other" --- "Connector (WIFI)"
- 5、 Enter the next page and enter the WIFI account and password (same as the mobile phone connected to WiFi)
- 6、 Click "Next" to go to the next page, tick "Confirm indicator flashes quickly"
- 7、 Click "Next" to display the progress of adding devices
- 8、 The red indicator light of the gateway is always on, and the network configuration is successful.



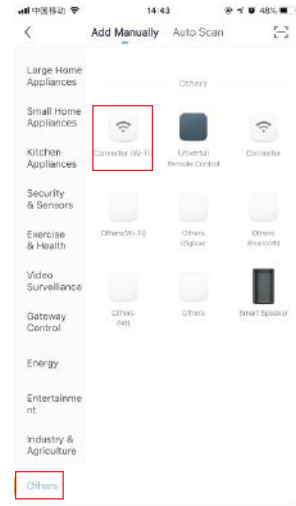
①



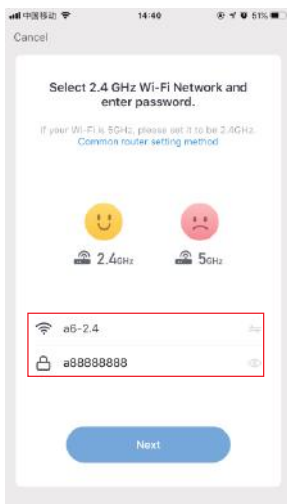
②



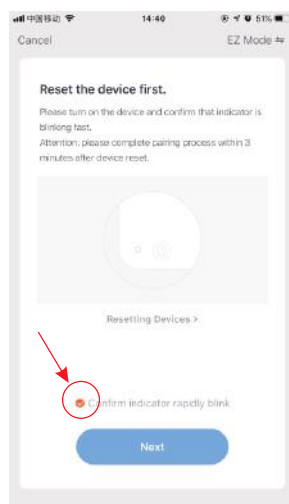
③



④



⑤



⑥



⑦



⑧



THE SMART ACTUATED VALVES EXPERTS

Gateway SAV-05 add sub-device

Option 1 : Fast mobile network distribution through mobile APP

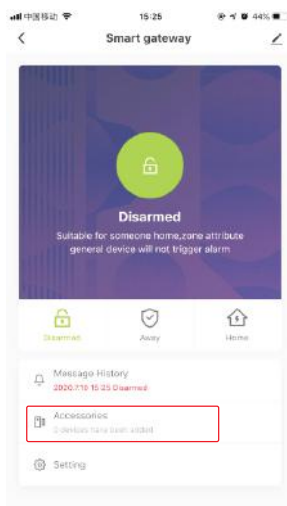
(Video tutorial)

- 1、 Open the APP gateway interface and select "Accessories"
- 2、 Select "Quick Add"
- 3、 Press the power button of the sub-device quickly twice, the gateway will send out a prompt ringtone, and the addition is successful
- 4、 Add more sub-devices and repeat actions 2、 3and 4 (As shown).



Option 2 :

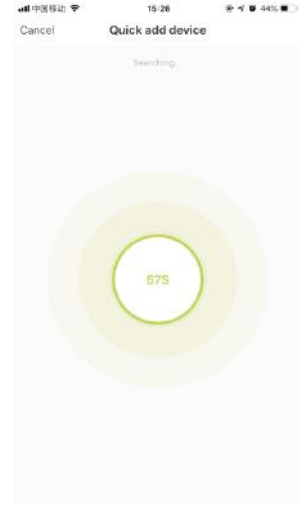
- 1、 Press and hold the function key for about 5 seconds, the waist light of the gateway will turn on and off once, and then release the function key after the green indicator light is on.
- 2、 After the white light on the waist of the gateway is always on, and press the function key of the sub-device continuously twice, the gateway will send out a prompt ringtone, and the network configuration is successful.



①



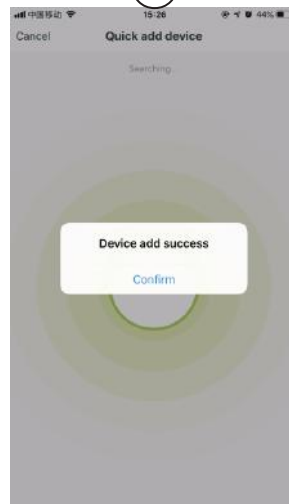
②



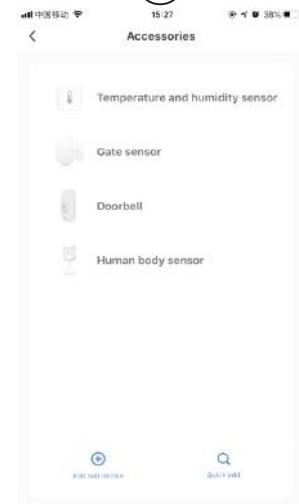
③



④



⑤



⑥



THE SMART ACTUATED VALVES EXPERTS

Mobile APP interface





THE **SMART ACTUATED VALVES** EXPERTS

Q&A

Can't the mobile APP connect to the gateway?

1. Follow the steps in the operating instructions to restart the connection once if it is not connected.
2. If you still can't connect, you can check several aspects to check whether the WIFI and mobile phone network are in normal use.
3. Confirm whether the WIFI name and wifi password are correct.
4. Whether the indicator of the sprinkler flashes quickly when connected.
5. Confirm that the connected router is in the 2.4GHz band. If it is in the 5G band, set it to the 2.4GHz band



THE **SMART ACTUATED VALVES** EXPERTS

www.smartactuatedvalves.co.uk



APP Download